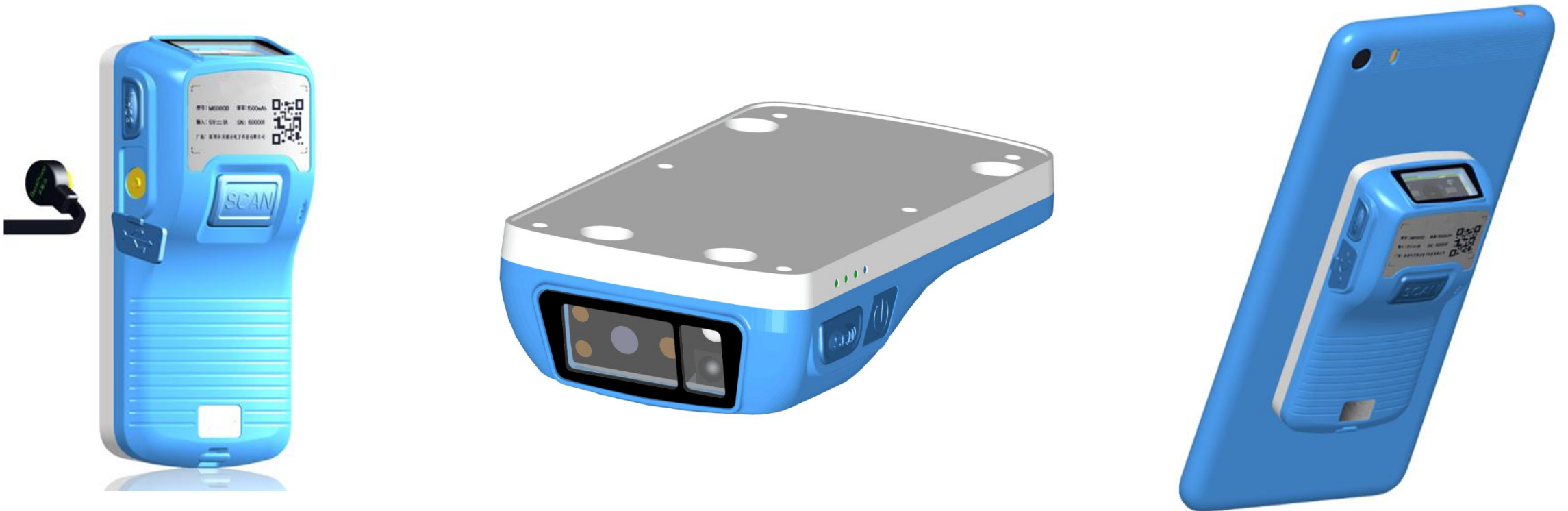
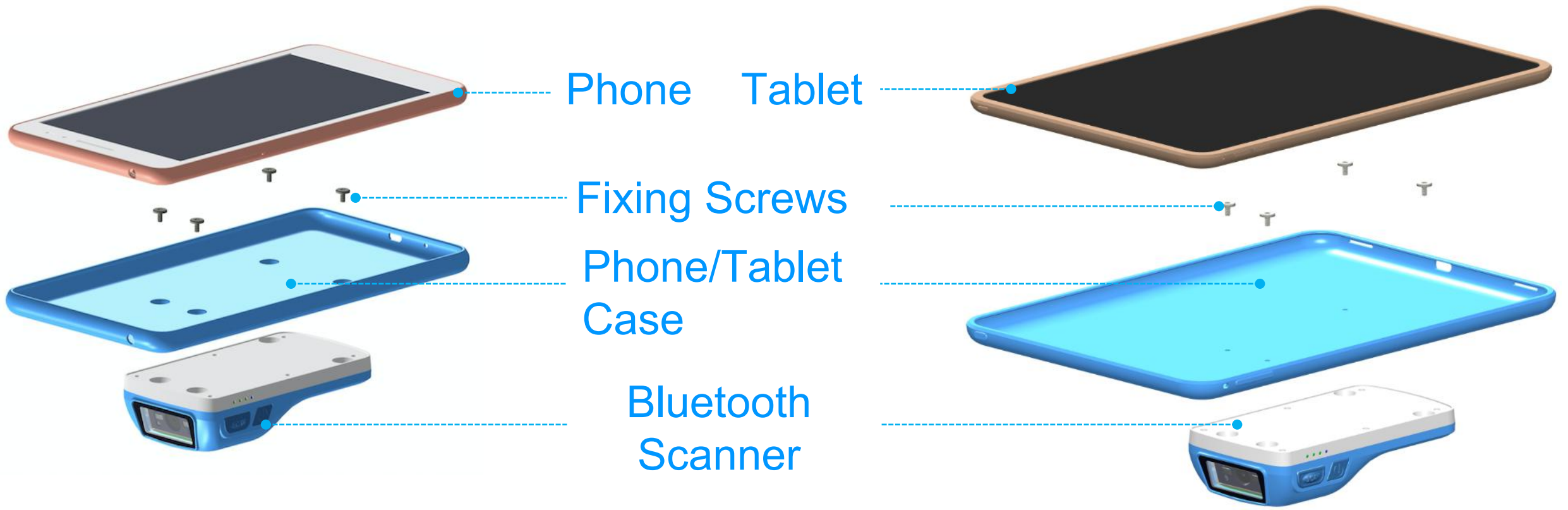


Handheld Bluetooth Scanner: RD-BT

One-handed Operation | Multi Function
Magnetic Charging | Compatible for Phone/Tablet



Fit for Phone and Tablet with Different Size



Phone Tablet

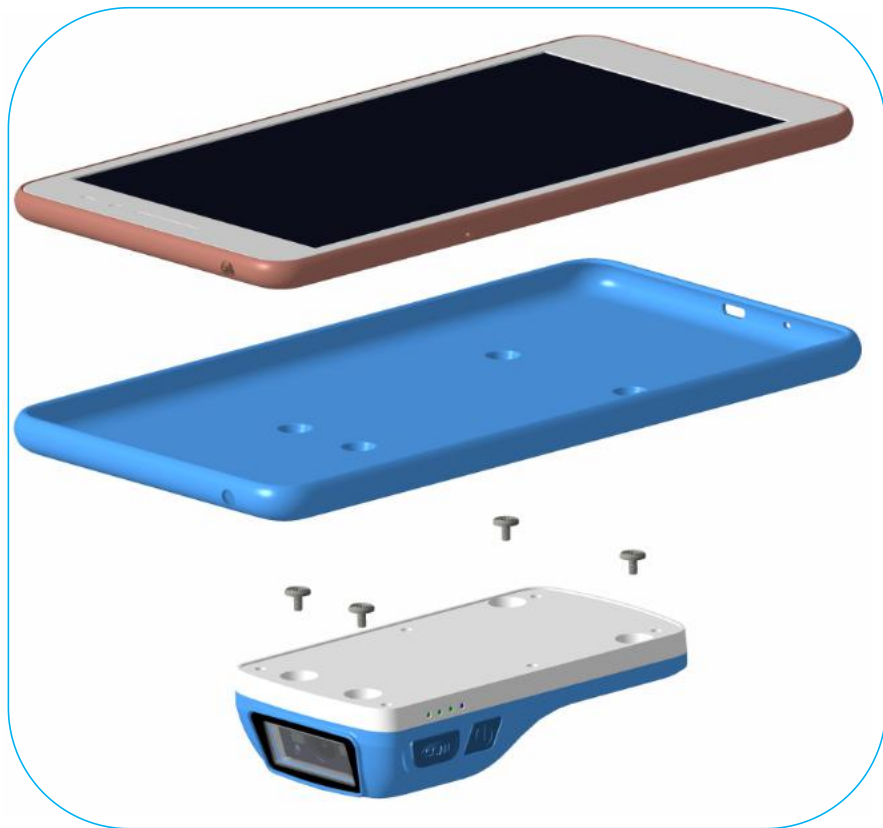
Fixing Screws

Phone/Tablet Case

Bluetooth Scanner

Phone/Tablet Case

Ready Made; No Need to Customize



Flexibility | Long Lifetime

Shortening Project
Development Time

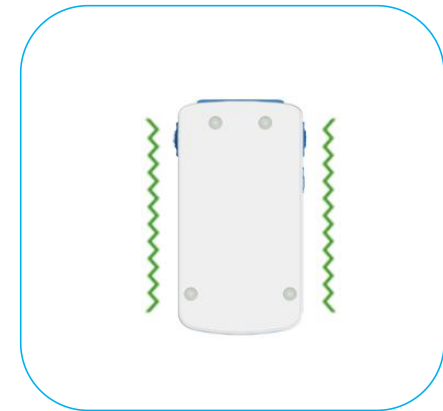
Multi Functions

Barcode		1D ; 2D
RFID		LF (125KHz) 、 HF(13.56MHz)



Status Instructions

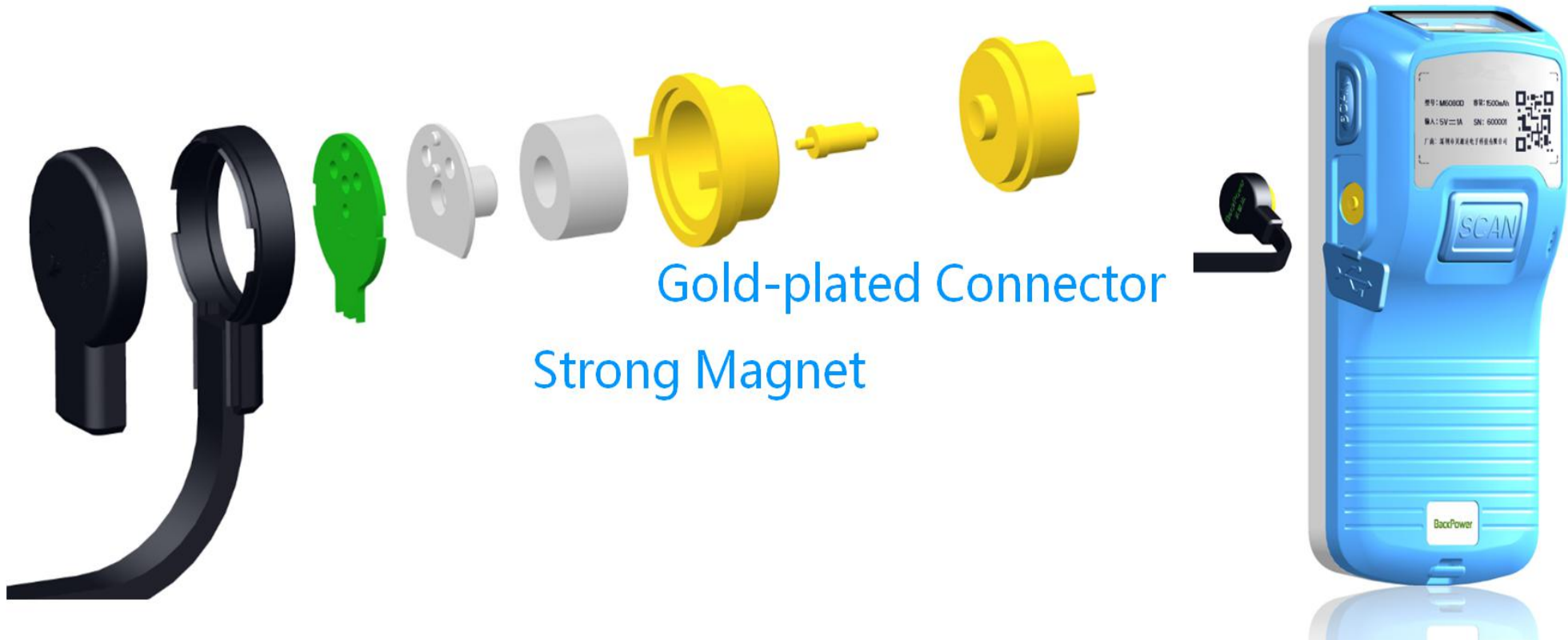
Buzzer / Vibration / Flashing Light / Bluetooth Status Light



Magnetic Charging: World's First Design

Convenient
Automatic Adsorption and Alignment

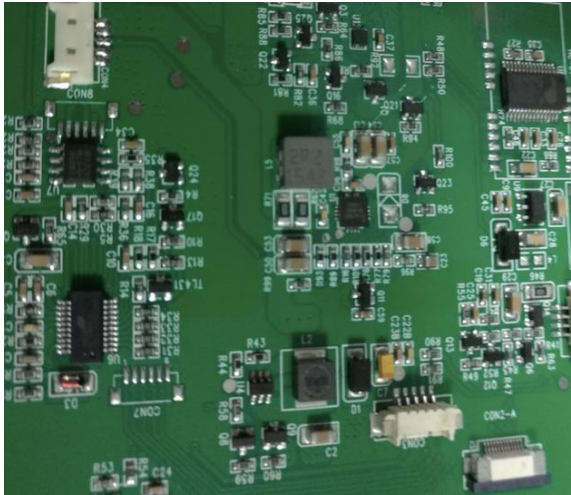
>30,000 times | 80 Years: 1 Charge Per Day
Instant Connection | No Loose



Gold-plated Connector

Strong Magnet

Intelligent Management



- Ultra-Low Power Consumption ; Bluetooth Transmission
- Smart Shutdown if no operation within 30 minutes; automatic Bluetooth connection when power on.
- Intelligent Power Management: Multiple safety protection
- Embedded Microcontroller: easy operating; high reliability; low fault rate

Ultra-long Standby

Battery: 1400~1500mAh High-energy Lithium Polymer
Battery

Work Time: 1 scan/sec.--8 Hours Continuous Working

Standby Time: >150hrs

High Industrial Grade

PC+ABS + V2Fireproof

Water and Dust Proof;
2M Drop Test; Anti-Bacteria;
IP66

High Transmittance,
Wipe Scratch Resistant



Dimension



90g
Net Weight

Mini / Light | Portable
Double-curved Design

Structure-Components

